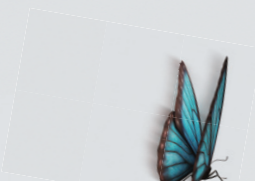


Zephyr Light





LIGHT & COMFORT JAPANESE DESIGN

Okamura Seating is recognised worldwide for its design functionality and comfort, as well as its beautiful form. These elements have earned worldwide praise. Zephyr Light is a task chair developed with 'seating that gently fits the body, made affordable' as its main concept.

Shaped for Ease

The beautifully organic shape of Zephyr Light is inspired by the smooth curves found in nature.

The back view in particular is defined by its frame, incorporating unique lines that seem to flow freely.

This soothing, stylish form brings a soft atmosphere to various spaces.





The perfect fit for any office

Zephyr Light brings peace to different office scenes and is the perfect addition to a range of environments; from cutting edge spaces to traditional style rooms.



Adjustable for a feel just right for you

Zephyr Light can be fully adjusted to each individual user. Thanks to fine adjustability in areas such as reclining angle, seat position and armrest height, comfort is maintained even after long periods of sitting.



Eight colors for a beautiful addition to the office

Adjustability



Seat Height Adjustment
Seat height can be raised or lowered 85 mm with a lever on the lower right side of the seat.



Seat Slide Adjustment
Seat Depth can be adjusted 50mm back or forth with a lever on the upper left side of the seat.



Reclining Adjustment
With the lever on the lower left-hand side of the seat, users can adjust the reclining angle in five positions. The range of recline can be adjusted smoothly.



Armrest Height Adjustment
Height of the chair's armrest can be adjusted in a 90mm range by operating the lever underneath the arm pad.



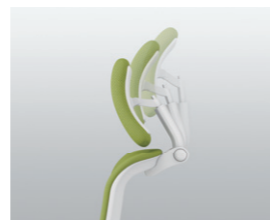
Arm Pad Angle Adjustment
They gently support the entire forearm when using the computer and performing other tasks.



Arm Pad Forward and Backward Adjustment
The arm pads can slide forward and backward in the range of 35mm (4D) 60mm (3D). This helps support the arms and building less fatigue.



Lumbar Support
With lumbar support, fatigue and stress on the hips and back can be reduced. Adjustments can be made up and down over a range of 50mm.

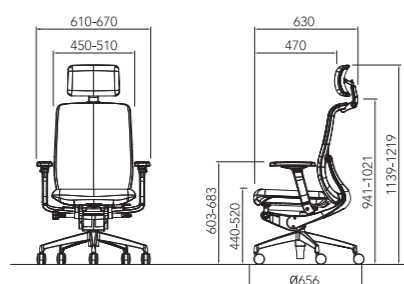


Headrest Adjustment
The headrest gently supports the back of the head. It can even be adjusted up and down and also to various angles.

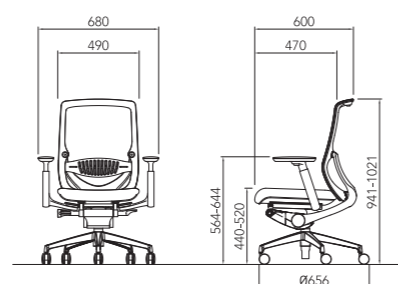


Arm Pad Left/Right Adjustment
The arm pads can slide left and right in the range of 30mm. This helps support the arms and reduce fatigue.

4D Arm



3D Arm



Frame Color

White

Black



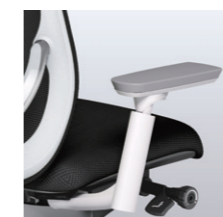
Fabric Color Variation

	Black FMS1	Gilt FMS8	Wine FMS9	Stone FMS2	Yellow FMS6	Green FMS5	Ocean FMS4	Cobalt FMS3
BACK (Mesh)								
SEAT (Cushion)								

Armrest



4D Adjustable armrest
The up and down(1D), angle(2D), back and forth(3D), and right and left (4D) positioning of the arm pads are adjustable.



3D Adjustable armrest
The up and down(1D), angle(2D), back and forth(3D) positioning of the arm pads are adjustable.



Without

Options



Lumbar Support



Headrest

THANK YOU !!!



Channel Partners:

B-122, Sector-67, Noida -201301, India

Mobile: +91 9818797744

Email: sales@indoinnovations.com

Website: www.indoinnovations.com